

Nazi documentation Vogelsang

Vogelsang 70
53937 Schleiden

Tel: +49 2444 91579-17

info@vogelsang-ip.de
<http://www.vogelsang-ip.de>

Information for guests with cognitive impairments

Information on accessibility was evaluated and verified on July 6, 2021 as part of the quality criteria / system "Tourism for all".

Images of the building/object



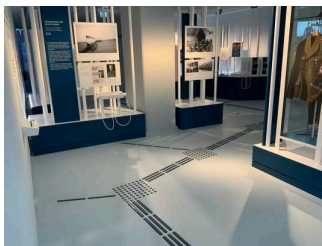
Exhibition

© Vogelsang IP Roman Hövel



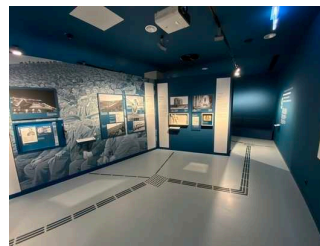
Exhibition

© Vogelsang IP Roman Hövel



Nazi documentation
Vogelsang

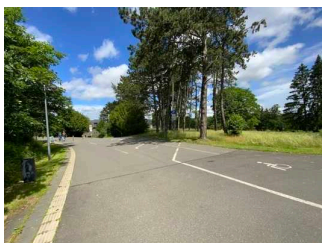
©Guido Frank



Nazi documentation
Vogelsang

©Guido Frank

Parken



Parken

©Guido Frank

Parking lot



Parking lot

©Guido Frank



Parking lot

©Guido Frank

There is no company parking available.

There is/are 4 parking space(s) for people with disabilities.

Parking space width: 350 cm

Parking space length: 500 cm

Distance from the parking space(s) for people with disabilities to the entrance area: 170 m

The parking space(s) for people with disabilities is/are not marked.

External path





There is an uninterrupted guidance system. There are signs in visible distance.

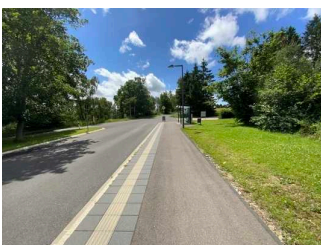
Signage



There is no information available that provides orientation and consists of words.

Information for orientation is available in Braille. Information for orientation is available in easy language. Information for orientation is available in written form.

ÖPNV-Haltestelle



ÖPNV-Haltestelle

©Guido Frank

Train/Bus platform/Ship dock

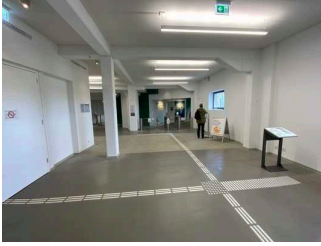


External path



There is an uninterrupted guidance system. There are signs in visible distance.

Entrance



Entrance

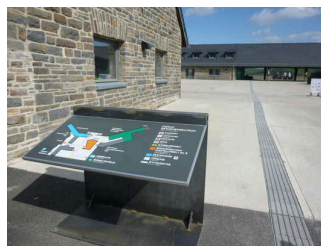
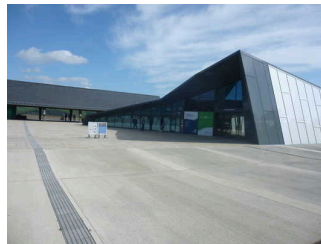
©Guido Frank



Entrance

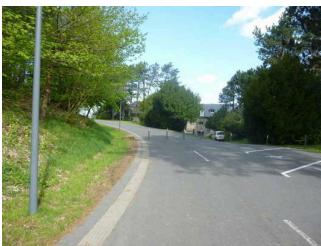
©Guido Frank

Entrance area



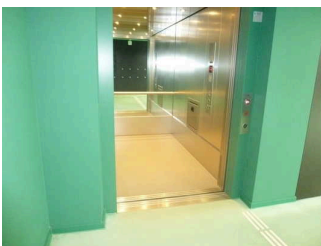
The name or logo of the establishment/facility is not clearly recognizable from the outside.

External path



There is an uninterrupted guidance system. There are signs in visible distance.

Elevator/lift



Elevator/lift

©Guido Frank



Elevator/lift

©Guido Frank



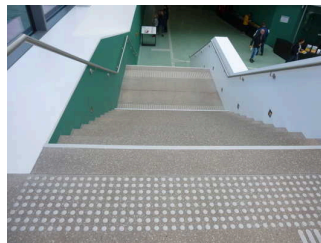
Elevator/lift

©Guido Frank

The operating controls or the signage are neither pictorial nor color-coded.

Corridor/way/aisle inside

Corridor/way/aisle inside





Corridor/way/aisle inside

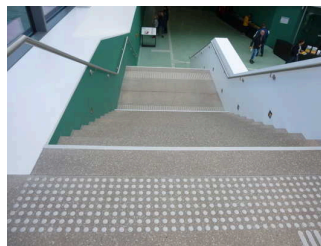
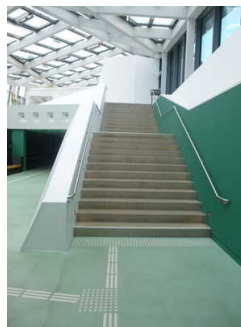
©Guido Frank



Length of the corridor/way/aisle: 10 m

The objective of the path is within sight. There is an uninterrupted guidance system.

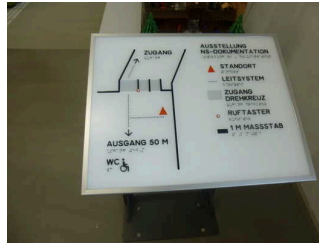
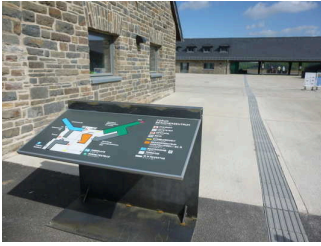
Corridor/way/aisle inside



Length of the corridor/way/aisle: 25 m

The objective of the path is within sight. There is an uninterrupted guidance system. There are signs in visible distance.

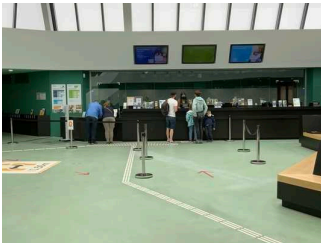
Signage



There is no information available that provides orientation and consists of words.

Information for orientation is available in Braille. Information for orientation is available in easy language. Information for orientation is available in written form.

Checkout / Cash desk



Checkout / Cash desk

©Guido Frank

Entrance area





The name or logo of the establishment/facility is not clearly recognizable from the outside.

Counter/Cash Desk



The path to the counter/checkout counter is pictorially and uninterruptedly marked.

Elevator/lift



Elevator/lift

©Guido Frank



Elevator/lift

©Guido Frank



Elevator/lift

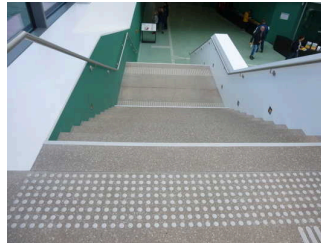
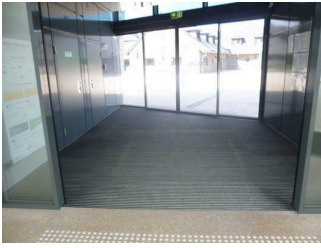
©Guido Frank

The operating controls or the signage are neither pictorial nor color-coded.

Corridor/way/aisle inside

Corridor/way/aisle inside





Corridor/way/aisle inside

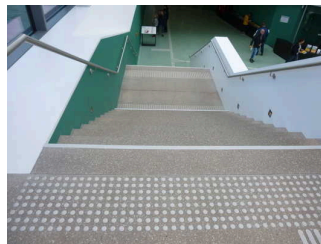
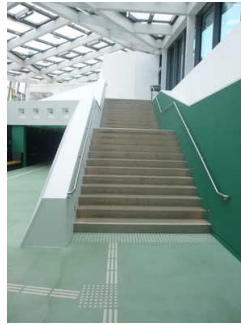
©Guido Frank



Length of the corridor/way/aisle: 10 m

The objective of the path is within sight. There is an uninterrupted guidance system.

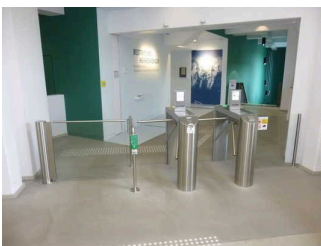
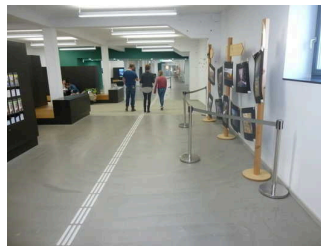
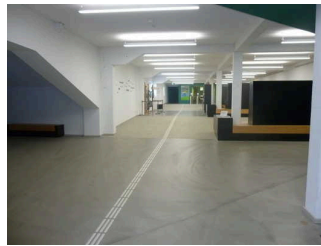
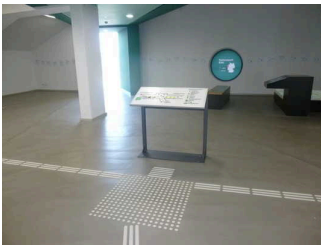
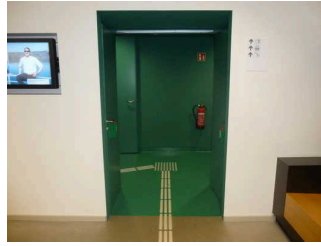
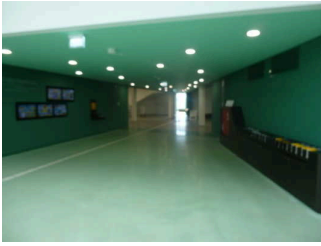
Corridor/way/aisle inside



Length of the corridor/way/aisle: 25 m

The objective of the path is within sight. There is an uninterrupted guidance system. There are signs in visible distance.

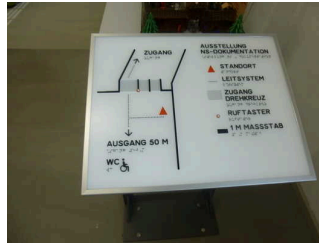
Corridor/way/aisle inside



Length of the corridor/way/aisle: 80 m

The objective of the path is within sight. There is an uninterrupted guidance system. There are signs in visible distance.

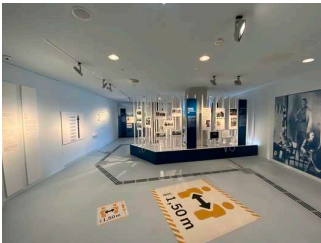
Signage



There is no information available that provides orientation and consists of words.

Information for orientation is available in Braille. Information for orientation is available in easy language. Information for orientation is available in written form.

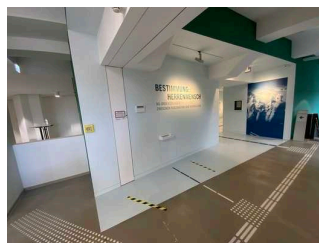
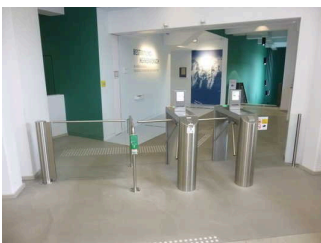
Showrooms



Showrooms

©Guido Frank

Entrance area



Entrance area

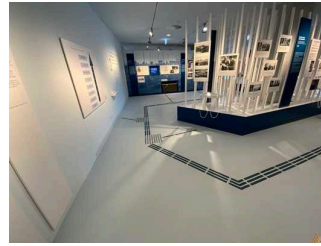
©Guido Frank

The name or logo of the establishment/facility is not clearly recognizable from the outside.

Additional information only available in German: Schranke mit Durchgangsbreite 120 cm.

Showroom/Hall

Showroom/Hall



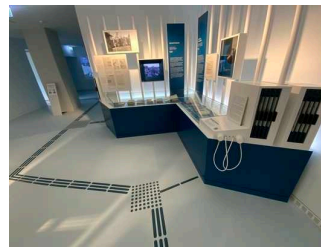
Showroom/Hall

©Guido Frank



Showroom/Hall

©Guido Frank



Showroom/Hall

©Guido Frank

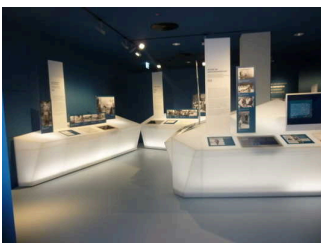


Showroom/Hall

©Guido Frank

Information is provided in writing. There is audible information. Information can be captured tactilely (braille, prismatic font). Information is displayed photo realistically.

Showroom/Hall





Showroom/Hall

©Guido Frank



Showroom/Hall

©Guido Frank



Showroom/Hall

©Guido Frank

Information is provided in writing. There is audible information. Information can be captured tactilely (braille, prismatic font). Information is displayed photo realistically.

Other technical possibilities of information: Mediaguide

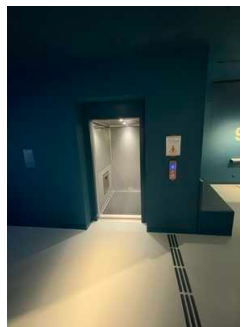
Elevator/lift

Elevator/lift



Elevator/lift

©Guido Frank



Elevator/lift

©Guido Frank

The operating controls or the signage are neither pictorial nor color-coded.

Elevator/lift



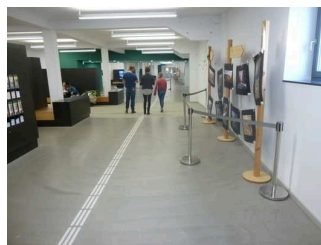
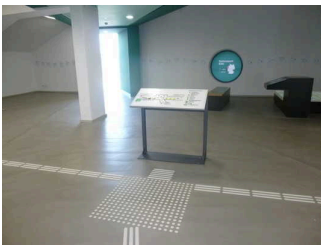
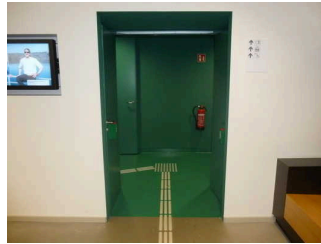
Elevator/lift

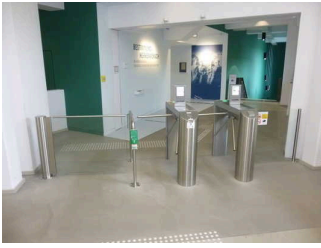
©Guido Frank

The operating controls or the signage are neither pictorial nor color-coded.

Corridor/way/aisle inside

Corridor/way/aisle inside





Length of the corridor/way/aisle: 80 m

The objective of the path is within sight. There is an uninterrupted guidance system. There are signs in visible distance.

Corridor/way/aisle inside

Length of the corridor/way/aisle: 200 m

The objective of the path is within sight. There is an uninterrupted guidance system.

Signage



There is no information available that provides orientation and consists of words.

Information for orientation is available in Braille. Information for orientation is available in easy language. Information for orientation is available in written form.

Public toilet

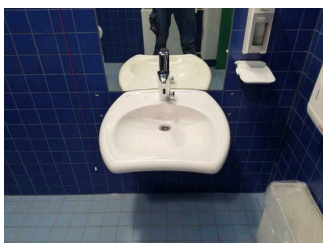
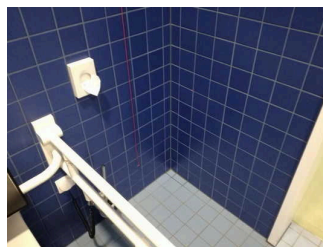


Public toilet

©Guido Frank

Public toilet

Public toilet



Additional information only available in German: Ein Wickeltisch für Kinder ist vorhanden.

Public toilet



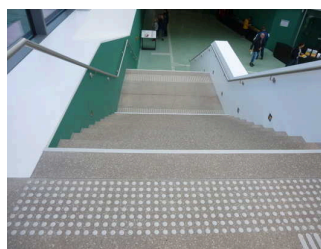
Public toilet

©Guido Frank

Additional information only available in German: Ein Wickeltisch für Kinder ist vorhanden.

Corridor/way/aisle inside

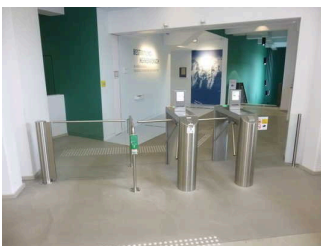
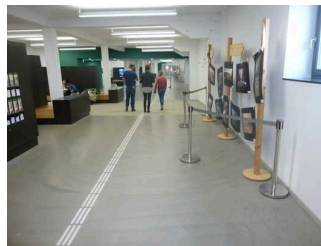
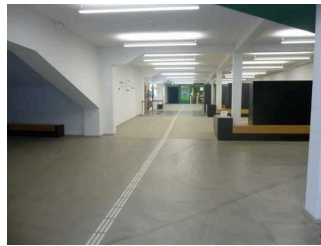
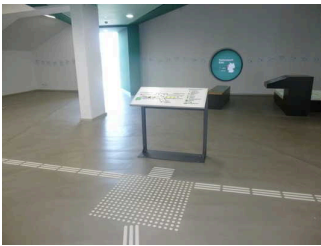
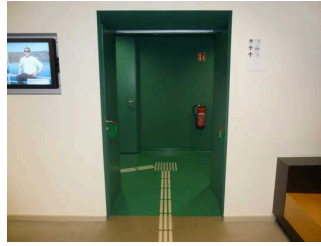
Corridor/way/aisle inside



Length of the corridor/way/aisle: 25 m

The objective of the path is within sight. There is an uninterrupted guidance system. There are signs in visible distance.

Corridor/way/aisle inside



Length of the corridor/way/aisle: 80 m

The objective of the path is within sight. There is an uninterrupted guidance system. There are signs in visible distance.

Shop

Elevator/lift



Elevator/lift

©Guido Frank



Elevator/lift

©Guido Frank

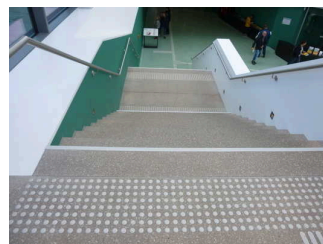
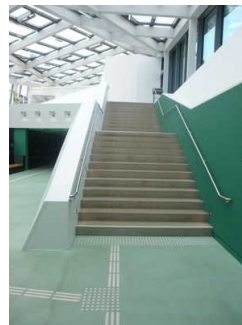


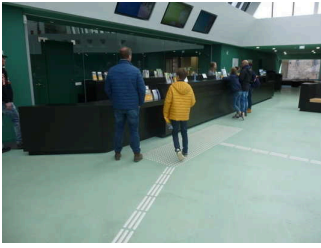
Elevator/lift

©Guido Frank

The operating controls or the signage are neither pictorial nor color-coded.

Corridor/way/aisle inside





Length of the corridor/way/aisle: 25 m

The objective of the path is within sight. There is an uninterrupted guidance system. There are signs in visible distance.

Aids

Alarm/Aids



Elevator/lift: Aufzug im Foyer

An outgoing emergency call in the elevator is confirmed audibly, e.g. by an intercom system. An outgoing emergency call in the elevator is confirmed visually, e.g. by a digitally printed text field.

Elevator/lift: Aufzug in der Ausstellung 1

An outgoing emergency call in the elevator is confirmed audibly, e.g. by an intercom system.

Elevator/lift: Aufzug in der Ausstellung 2

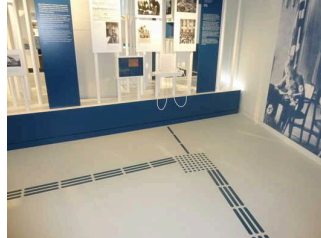
An outgoing emergency call in the elevator is confirmed audibly, e.g. by an intercom system.

Wheelchair, Audio guides

Audioguide is available. Multimedia Guide is available. Movies are available.

Bedienelemente_Gehbahn_Beschilderung

Visual and tactile design



Information for orientation is available in Braille. Information for orientation is available in easy language. Information for orientation is available in written form.

Signage



There is no information available that provides orientation and consists of words.

Information for orientation is available in Braille. Information for orientation is available in easy language. Information for orientation is available in written form.

Führungen

Guided tours