

Nazi documentation Vogelsang

Vogelsang 70
53937 Schleiden

Tel: +49 2444 91579-17

info@vogelsang-ip.de
<http://www.vogelsang-ip.de>

Information for people with walking difficulties and wheelchair users

Information on accessibility was evaluated and verified on July 6, 2021 as part of the quality criteria / system "Tourism for all".

Images of the building/object



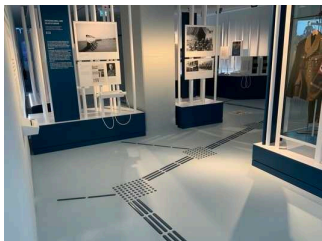
Exhibition

© Vogelsang IP Roman Hövel



Exhibition

© Vogelsang IP Roman Hövel



Nazi documentation
Vogelsang

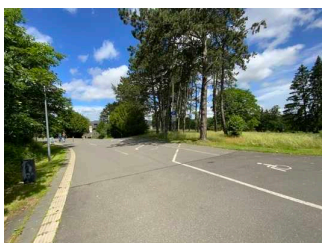
©Guido Frank



Nazi documentation
Vogelsang

©Guido Frank

Parken



Parken

©Guido Frank

Parking lot



Parking lot

©Guido Frank



Parking lot

©Guido Frank

There is no company parking available.

There is/are 4 parking space(s) for people with disabilities.

Parking space width: 350 cm

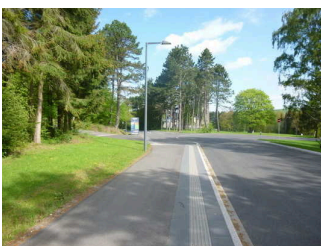
Parking space length: 500 cm

The surface quality of the car park is not vibration free and is easy to walk and drive on (e.g. asphalt, narrow-jointed slabs, etc.).

Distance from the parking space(s) for people with disabilities to the entrance area: 170 m

The parking space(s) for people with disabilities is/are not marked.

External path





Width of the path: 350 cm

Length of the path: 220 m

Due to its surface characteristics, the path is not vibration-free and easy to walk on (e.g. asphalt, narrow-jointed slabs, etc.).

The distance between the bollards: 140 cm

Maximum longitudinal gradient of the path: 3 %

Maximum longitudinal gradient over a distance of 100 m.

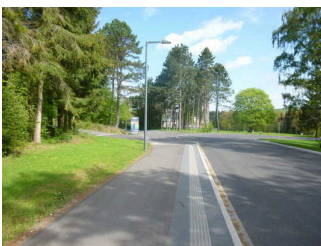
ÖPNV-Haltestelle



ÖPNV-Haltestelle

©Guido Frank

Train/Bus platform/Ship dock



External path



Width of the path: 350 cm

Length of the path: 220 m

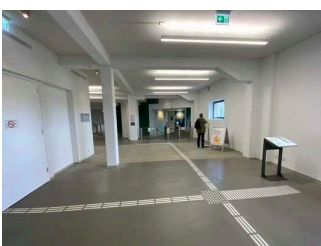
Due to its surface characteristics, the path is not vibration-free and easy to walk on (e.g. asphalt, narrow-jointed slabs, etc.).

The distance between the bollards: 140 cm

Maximum longitudinal gradient of the path: 3 %

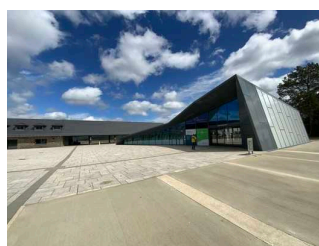
Maximum longitudinal gradient over a distance of 100 m.

Entrance



Entrance

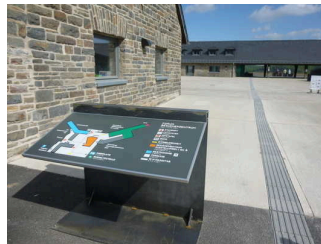
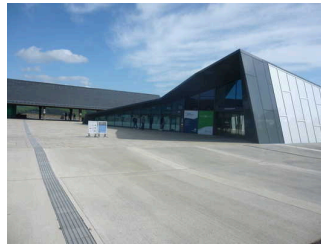
©Guido Frank



Entrance

©Guido Frank

Entrance area



Clear width of the passageway: 217 cm

Type of door/passageway: other

The door is opened without using any force (lever handle, light barrier sensor, motion detector, etc.).

The WIDTH of the smaller manoeuvring area in front of / behind the door: 412 cm

The DEPTH of the smaller manoeuvring area in front of / behind the door: 450 cm

The threshold height: 0 cm

External path



Width of the path: 350 cm

Length of the path: 220 m

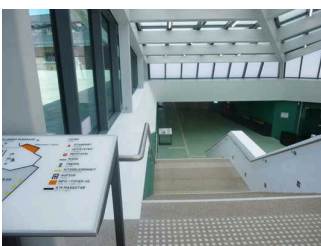
Due to its surface characteristics, the path is not vibration-free and easy to walk on (e.g. asphalt, narrow-jointed slabs, etc.).

The distance between the bollards: 140 cm

Maximum longitudinal gradient of the path: 3 %

Maximum longitudinal gradient over a distance of 100 m.

Threshold/step/stairs



Threshold/step/stairs

©Guido Frank

Existing thresholds/steps: 23

The height of the thresholds/steps: 17 cm

The stairs are not straight.

The staircase has handrails on both sides.

Elevator/lift



Elevator/lift

©Guido Frank



Elevator/lift

©Guido Frank



Elevator/lift

©Guido Frank

The WIDTH of the manoeuvring space in front of the elevator when entering: 1000 cm

The DEPTH of the manoeuvring space in front of the elevator when entering: 800 cm

Clear passage width of the elevator door: 130 cm

The WIDTH of the cabin inside: 135 cm

The DEPTH of the cabin inside: 245 cm

The WIDTH of the manoeuvring space in front of the elevator when exiting: 2000 cm

The DEPTH of the manoeuvring space in front of the elevator when exiting: 455 cm

There is no horizontal control panel.

The controls are arranged as follows:

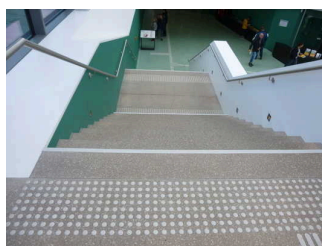
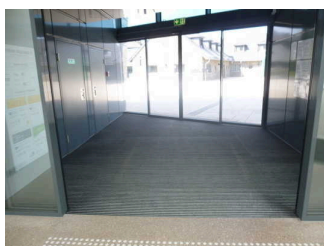
The HIGHEST position of the controls: 107 cm

The LOWEST position of the controls: 90 cm

The horizontal distance from the corner of the cabin to the first control element (central) is 60 cm.

Corridor/way/aisle inside

Corridor/way/aisle inside



Corridor/way/aisle inside

©Guido Frank

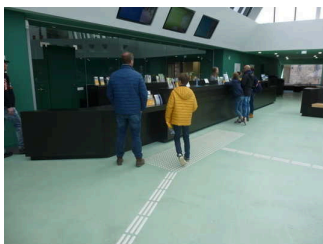
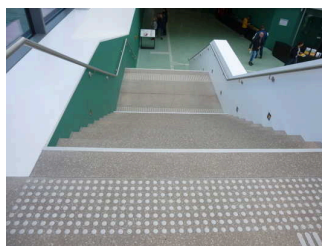


Length of the corridor/way/aisle: 10 m

Minimum width of the corridor/way/aisle: 300 cm

The width of the path/corridor is not restricted.

Corridor/way/aisle inside

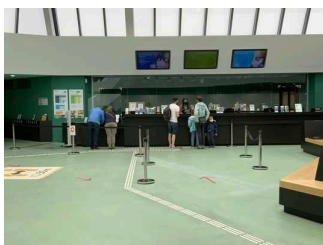


Length of the corridor/way/aisle: 25 m

Minimum width of the corridor/way/aisle: 180 cm

The width of the path/corridor is not restricted.

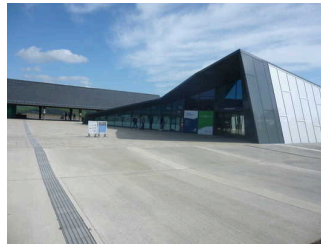
Checkout / Cash desk



Checkout / Cash desk

©Guido Frank

Entrance area



Clear width of the passageway: 217 cm

Type of door/passageway: other

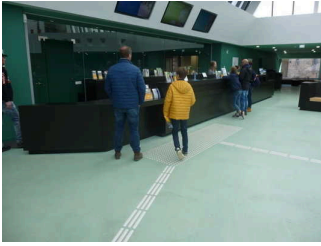
The door is opened without using any force (lever handle, light barrier sensor, motion detector, etc.).

The WIDTH of the smaller manoeuvring area in front of / behind the door: 412 cm

The DEPTH of the smaller manoeuvring area in front of / behind the door: 450 cm

The threshold height: 0 cm

Counter/Cash Desk



The WIDTH of the manoeuvring space in front of the counter: 1170 cm

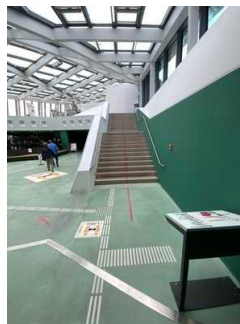
The DEPTH of the manoeuvring space in front of the counter: 1000 cm

The counter / cash desk is at its highest point 116 cm high.

The counter / cash desk is at its lowest point 85 cm high.

There is no other, equivalent communication possibility while in a sitting position.

Threshold/step/stairs



Threshold/step/stairs

©Guido Frank

Existing thresholds/steps: 23

The height of the thresholds/steps: 17 cm

The stairs are not straight.

The staircase has handrails on both sides.

Elevator/lift



Elevator/lift

©Guido Frank



Elevator/lift

©Guido Frank



Elevator/lift

©Guido Frank

The WIDTH of the manoeuvring space in front of the elevator when entering: 1000 cm

The DEPTH of the manoeuvring space in front of the elevator when entering: 800 cm

Clear passage width of the elevator door: 130 cm

The WIDTH of the cabin inside: 135 cm

The DEPTH of the cabin inside: 245 cm

The WIDTH of the manoeuvring space in front of the elevator when exiting: 2000 cm

The DEPTH of the manoeuvring space in front of the elevator when exiting: 455 cm

There is no horizontal control panel.

The controls are arranged as follows:

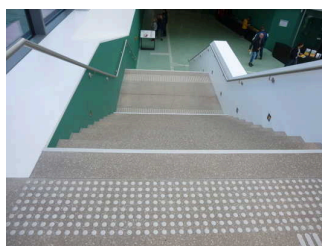
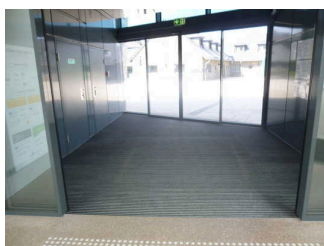
The HIGHEST position of the controls: 107 cm

The LOWEST position of the controls: 90 cm

The horizontal distance from the corner of the cabin to the first control element (central) is 60 cm.

Corridor/way/aisle inside

Corridor/way/aisle inside



Corridor/way/aisle inside

©Guido Frank

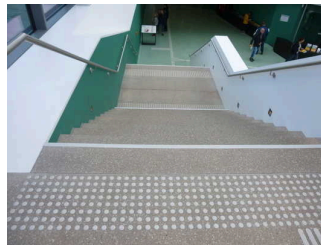


Length of the corridor/way/aisle: 10 m

Minimum width of the corridor/way/aisle: 300 cm

The width of the path/corridor is not restricted.

Corridor/way/aisle inside

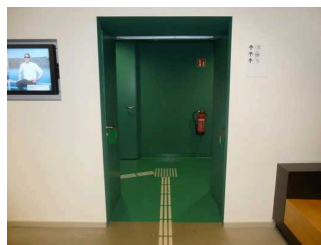


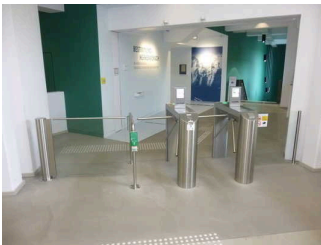
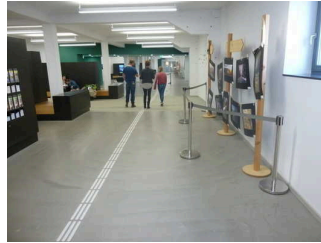
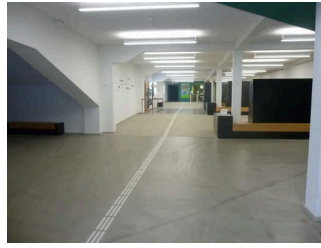
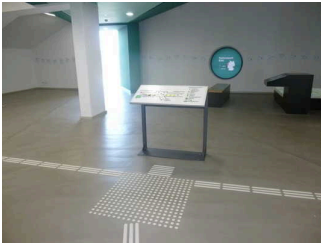
Length of the corridor/way/aisle: 25 m

Minimum width of the corridor/way/aisle: 180 cm

The width of the path/corridor is not restricted.

Corridor/way/aisle inside



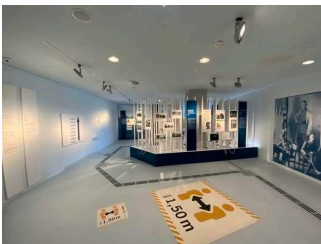


Length of the corridor/way/aisle: 80 m

Minimum width of the corridor/way/aisle: 480 cm

Existing passageways are at least 88 cm wide.

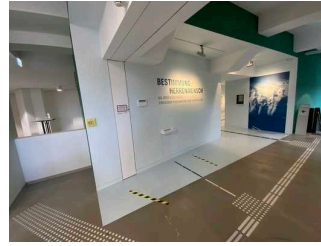
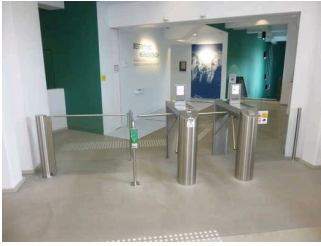
Showrooms



Showrooms

©Guido Frank

Entrance area



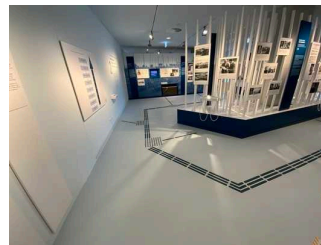
Entrance area

©Guido Frank

Additional information only available in German: Schranke mit Durchgangsbreite 120 cm.

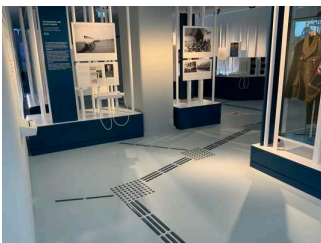
Showroom/Hall

Showroom/Hall



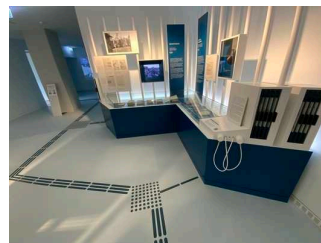
Showroom/Hall

©Guido Frank



Showroom/Hall

©Guido Frank



Showroom/Hall

©Guido Frank



Showroom/Hall

©Guido Frank

The width of the narrowest passageway in the room: 180 cm

The exhibited objects are not predominately visible, perceptible or recognisable when seated.

The information on the exhibits is predominately readable when seated.

Information is provided in writing. There is audible information. Information can be captured tactilely (braille, prismatic font). Information is displayed photo realistically.

Showroom/Hall



Showroom/Hall

©Guido Frank



Showroom/Hall

©Guido Frank



Showroom/Hall

©Guido Frank

The width of the narrowest passageway in the room: 130 cm

The exhibited objects are not predominately visible, perceptible or recognisable when seated.

The information on the exhibits is predominately readable when seated.

Information is provided in writing. There is audible information. Information can be captured tactilely (braille, prismatic font). Information is displayed photo realistically.

Other technical possibilities of information: Mediaguide

Threshold/step/stairs

Threshold/step/stairs



Threshold/step/stairs

©Guido Frank

Existing thresholds/steps: 24

The height of the thresholds/steps: 17 cm

The stairs are not straight.

The staircase has handrails on both sides.

Threshold/step/stairs



Threshold/step/stairs

©Guido Frank

Existing thresholds/steps: 24

The height of the thresholds/steps: 17 cm

The stairs are not straight.

The staircase has handrails on both sides.

Elevator/lift

Elevator/lift



Elevator/lift

©Guido Frank



Elevator/lift

©Guido Frank

The WIDTH of the manoeuvring space in front of the elevator when entering: 217 cm

The DEPTH of the manoeuvring space in front of the elevator when entering: 650 cm

Clear passage width of the elevator door: 90 cm

The WIDTH of the cabin inside: 110 cm

The DEPTH of the cabin inside: 144 cm

The WIDTH of the manoeuvring space in front of the elevator when exiting: 203 cm

The DEPTH of the manoeuvring space in front of the elevator when exiting: 320 cm

There is no horizontal control panel.

The controls are arranged as follows:

The HIGHEST position of the controls: 112 cm

The LOWEST position of the controls: 102 cm

The horizontal distance from the corner of the cabin to the first control element (central) is 67 cm.

Elevator/lift



Elevator/lift

©Guido Frank

The WIDTH of the manoeuvring space in front of the elevator when entering: 350 cm

The DEPTH of the manoeuvring space in front of the elevator when entering: 550 cm

Clear passage width of the elevator door: 90 cm

The WIDTH of the cabin inside: 110 cm

The DEPTH of the cabin inside: 140 cm

The WIDTH of the manoeuvring space in front of the elevator when exiting: 350 cm

The DEPTH of the manoeuvring space in front of the elevator when exiting: 550 cm

There is no horizontal control panel.

The controls are arranged as follows:

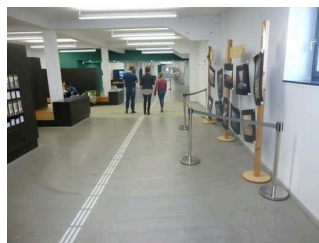
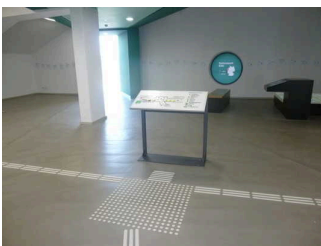
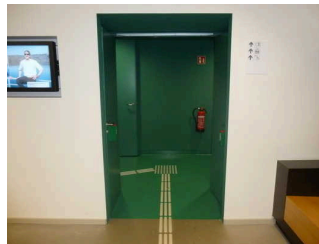
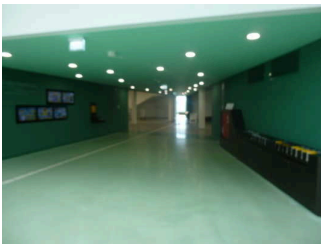
The HIGHEST position of the controls: 115 cm

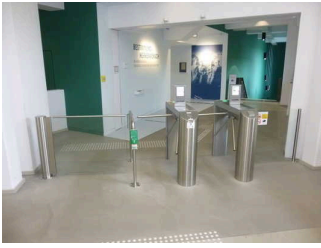
The LOWEST position of the controls: 110 cm

The horizontal distance from the corner of the cabin to the first control element (central) is 67 cm.

Corridor/way/aisle inside

Corridor/way/aisle inside





Length of the corridor/way/aisle: 80 m

Minimum width of the corridor/way/aisle: 480 cm

Existing passageways are at least 88 cm wide.

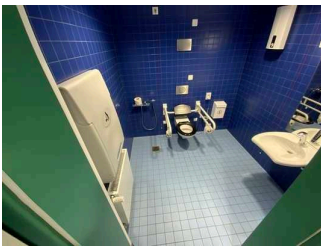
Corridor/way/aisle inside

Length of the corridor/way/aisle: 200 m

Minimum width of the corridor/way/aisle: 177 cm

Existing passageways are at least 88 cm wide.

Public toilet

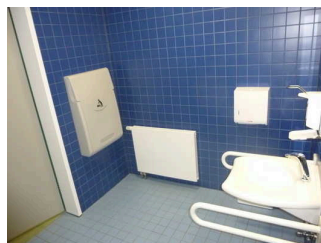


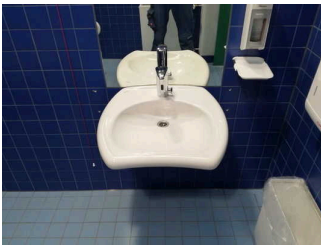
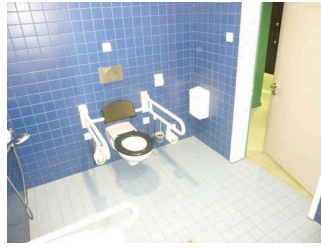
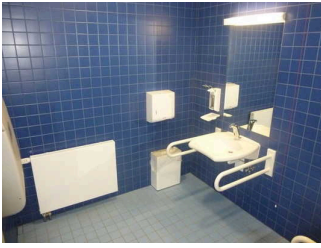
Public toilet

©Guido Frank

Public toilet

Public toilet





Clear width of the passageway: 93 cm

Type of door: single leaf

The door is opened requiring the users own effort.

The WIDTH of the smaller manoeuvring area in front of / behind the door: 145 cm

The DEPTH of the smaller manoeuvring area in front of / behind the door: 189 cm

The threshold height: 0 cm

The door opens outwards.

The toilet door can be opened without a key.

There is a uni-sex toilet.

There is no toilet available for people with disabilities.

The depth of the toilet bowl: 70 cm

The WIDTH of the manoeuvring space left of the toilet: 89 cm

The DEPTH of the manoeuvring space left of the toilet: 70 cm

The WIDTH of the manoeuvring space right of the toilet: 88 cm

The DEPTH of the manoeuvring space right of the toilet: 70 cm

The WIDTH of the manoeuvring space in front of the toilet: 145 cm

The DEPTH of the manoeuvring space in front of the toilet: 189 cm

The height of the toilet seat: 48 cm

There is no grab rail on the left side of the toilet.

The height of the left grab rail: 75 cm

The length of the left grab rail: 85 cm

The grab rail on the left of the toilet cannot be flipped-up.

There is no grab rail on the right side of the toilet.

The height of the right grab rail: 75 cm

The length of the right grab rail: 85 cm

The grab rail on the right of the toilet cannot be flipped-up.

There is no grab rail available.

The distance between the left and right grab rail is 70 cm.

The WIDTH of the manoeuvring space in front of the sink: 189 cm

The DEPTH of the manoeuvring space in front of the sink: 145 cm

The height of the sink (front upper edge): 80 cm

The sink is wheelchair compatible at a height of 67 cm and a depth of at least of 30 cm.

The mirror is not visible while standing or sitting.

There is a cord as an alarm trigger available.

The height of the alarm trigger from the floor: 25 cm

Additional information only available in German: Ein Wickeltisch für Kinder ist vorhanden.

Public toilet



Public toilet

©Guido Frank

Clear width of the passageway: 90 cm

Type of door: single leaf

The door is opened requiring the users own effort.

The WIDTH of the smaller manoeuvring area in front of / behind the door: 153 cm

The DEPTH of the smaller manoeuvring area in front of / behind the door: 148 cm

The threshold height: 1 cm

The door opens outwards.

The toilet door can be opened without a key.

There is a uni-sex toilet.

There is no toilet available for people with disabilities.

The depth of the toilet bowl: 70 cm

The WIDTH of the manoeuvring space left of the toilet: 94 cm

The DEPTH of the manoeuvring space left of the toilet: 70 cm

The WIDTH of the manoeuvring space right of the toilet: 97 cm

The DEPTH of the manoeuvring space right of the toilet: 70 cm

The WIDTH of the manoeuvring space in front of the toilet: 160 cm

The DEPTH of the manoeuvring space in front of the toilet: 148 cm

The height of the toilet seat: 47 cm

Access to the manoeuvring space right or left of the toilet is restricted. The passage width is: 81 cm.

There is no grab rail on the left side of the toilet.

The height of the left grab rail: 75 cm

The length of the left grab rail: 85 cm

The grab rail on the left of the toilet cannot be flipped-up.

There is no grab rail on the right side of the toilet.

The height of the right grab rail: 75 cm

The length of the right grab rail: 85 cm

The grab rail on the right of the toilet cannot be flipped-up.

There is no grab rail available.

The distance between the left and right grab rail is 70 cm.

The WIDTH of the manoeuvring space in front of the sink: 145 cm

The DEPTH of the manoeuvring space in front of the sink: 160 cm

The height of the sink (front upper edge): 80 cm

The sink is wheelchair compatible at a height of 67 cm and a depth of at least of 30 cm.

The mirror is not visible while standing or sitting.

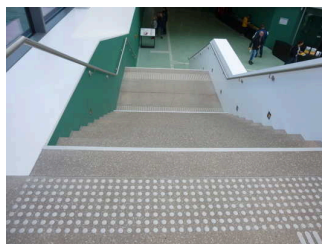
There is a cord as an alarm trigger available.

The height of the alarm trigger from the floor: 25 cm

Additional information only available in German: Ein Wickeltisch für Kinder ist vorhanden.

Corridor/way/aisle inside

Corridor/way/aisle inside

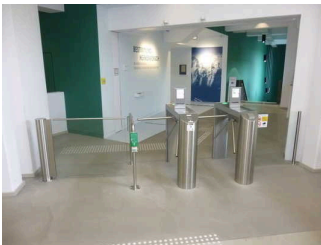
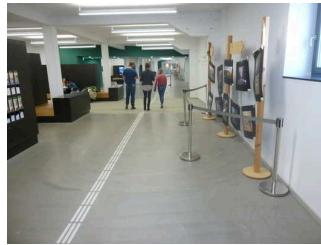
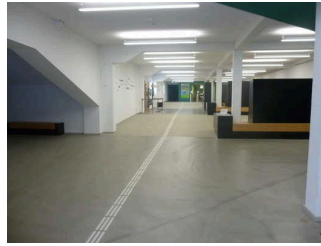
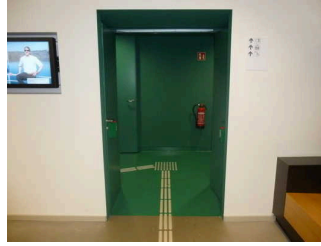


Length of the corridor/way/aisle: 25 m

Minimum width of the corridor/way/aisle: 180 cm

The width of the path/corridor is not restricted.

Corridor/way/aisle inside



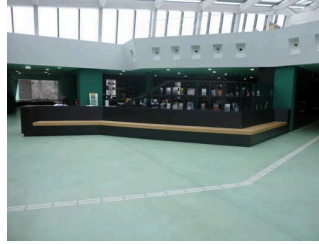
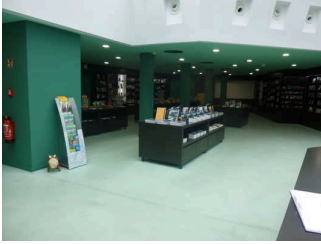
Length of the corridor/way/aisle: 80 m

Minimum width of the corridor/way/aisle: 480 cm

Existing passageways are at least 88 cm wide.

Shop

Room



The WIDTH of the room: 15 m

The DEPTH of the room: 18 m

The width of the narrowest passageway in the room: 183 cm

Threshold/step/stairs



Threshold/step/stairs

©Guido Frank

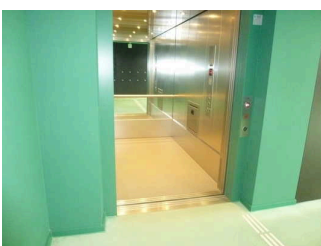
Existing thresholds/steps: 23

The height of the thresholds/steps: 17 cm

The stairs are not straight.

The staircase has handrails on both sides.

Elevator/lift



Elevator/lift

©Guido Frank



Elevator/lift

©Guido Frank



Elevator/lift

©Guido Frank

The WIDTH of the manoeuvring space in front of the elevator when entering: 1000 cm

The DEPTH of the manoeuvring space in front of the elevator when entering: 800 cm

Clear passage width of the elevator door: 130 cm

The WIDTH of the cabin inside: 135 cm

The DEPTH of the cabin inside: 245 cm

The WIDTH of the manoeuvring space in front of the elevator when exiting: 2000 cm

The DEPTH of the manoeuvring space in front of the elevator when exiting: 455 cm

There is no horizontal control panel.

The controls are arranged as follows:

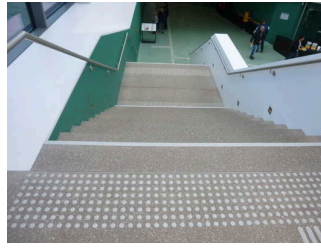
The HIGHEST position of the controls: 107 cm

The LOWEST position of the controls: 90 cm

The horizontal distance from the corner of the cabin to the first control element (central) is 60 cm.

Corridor/way/aisle inside





Length of the corridor/way/aisle: 25 m

Minimum width of the corridor/way/aisle: 180 cm

The width of the path/corridor is not restricted.

Aids

Alarm/Aids



Elevator/lift: Aufzug im Foyer

An outgoing emergency call in the elevator is confirmed audibly, e.g. by an intercom system. An outgoing emergency call in the elevator is confirmed visually, e.g. by a digitally printed text field.

Elevator/lift: Aufzug in der Ausstellung 1

An outgoing emergency call in the elevator is confirmed audibly, e.g. by an intercom system.

Elevator/lift: Aufzug in der Ausstellung 2

An outgoing emergency call in the elevator is confirmed audibly, e.g. by an intercom system.

Assistance dogs may not be brought to the establishment.

Wheelchair, Audio guides

Führungen

Guided tours